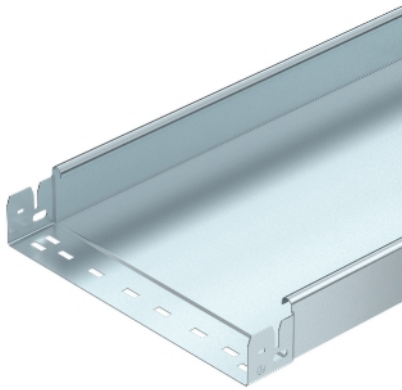


Cable tray MKS-Magic® 60, unperforated FS



Unperforated cable tray with quick connection system, including all the relevant connection components for time-saving and economic installation.

The stock length is 3,050 mm, the usable length when combined is 3,000 mm.

The spring element FED 60 can be ordered separately as an accessory part (spare) for the Magic cable trays with a side height of 60 mm, 85 mm and 110 mm under the article number 6068859.

The continuous equipotential bonding is guaranteed without additional components.

VDE-tested cable tray system.

Type	Width mm	Plate thickness mm	Pack. m	Weight kg/100 m	Item No.
MKSMU 610 FS	100	1	3	191,150	6059230
MKSMU 615 FS	150	1	3	230,500	6059232
MKSMU 620 FS	200	1	3	269,840	6059234
MKSMU 630 FS	300	1	3	348,200	6059237
MKSMU 640 FS	400	1	3	426,580	6059239
MKSMU 650 FS	500	1	3	505,250	6059241
MKSMU 660 FS	600	1	3	583,600	6059243

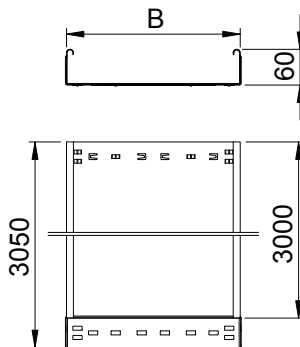
MKSMU 610 FT	100	1	3	208,500	6059248
MKSMU 615 FT	150	1	3	253,280	6059250
MKSMU 620 FT	200	1	3	296,721	6059252
MKSMU 630 FT	300	1	3	379,672	6059254
MKSMU 640 FT	400	1	3	465,246	6059256
MKSMU 650 FT	500	1	3	550,820	6059258
MKSMU 660 FT	600	1	3	636,390	6059260

St Steel

FS Strip-galvanised

FT Hot-dip galvanised

Dimensions



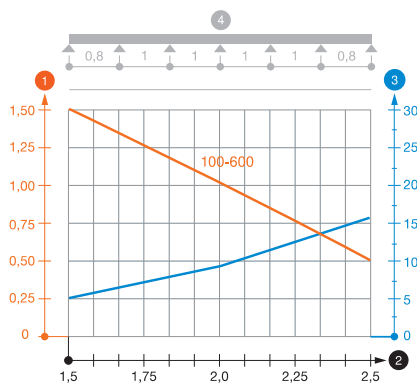
Type	Length mm	Dimen- sion B mm	Useful cross- section cm ²
MKSMU 610 FS	3050	100	58
MKSMU 615 FS	3050	150	88
MKSMU 620 FS	3050	200	118
MKSMU 630 FS	3050	300	178
MKSMU 640 FS	3050	400	238
MKSMU 650 FS	3050	500	298
MKSMU 660 FS	3050	600	358
MKSMU 610 FT	3050	100	58
MKSMU 615 FT	3050	150	88
MKSMU 620 FT	3050	200	118
MKSMU 630 FT	3050	300	178
MKSMU 640 FT	3050	400	238
MKSMU 650 FT	3050	500	298
MKSMU 660 FT	3050	600	358

Cable tray MKS-Magic® 60, unperforated FS

Load

Type 1.5 m 2.0 m 2.5 m
 kN/m kN/m kN/m

MKSMU 610 FS	1,5	1	0,5
MKSMU 615 FS	1,5	1	0,5
MKSMU 620 FS	1,5	1	0,5
MKSMU 630 FS	1,5	1	0,5
MKSMU 640 FS	1,5	1	0,5
MKSMU 650 FS	1,5	1	0,5
MKSMU 660 FS	1,5	1	0,5
MKSMU 610 FT	1,5	1	0,5
MKSMU 615 FT	1,5	1	0,5
MKSMU 620 FT	1,5	1	0,5
MKSMU 630 FT	1,5	1	0,5
MKSMU 640 FT	1,5	1	0,5
MKSMU 650 FT	1,5	1	0,5
MKSMU 660 FT	1,5	1	0,5



Load diagram, cable tray, type MKSMU 60

- 1 Permitted cable tray/ladder load in kN/m without man load
- 2 Support width in m
- 3 Rail bend in mm at permitted kN/m
- 4 Load scheme during testing
- Load curve with cable tray/ladder width in mm
- Strut bend curve according to support width