

1) Ultrasonic transducer axis, 2) Exit direction 90° connector, 3) Display and control panel



IND. CONT. EQ
 5HP6
 for use in the secondary of
 a class 2 source of supply



Display/Operation

Adjuster	Key (2x)
Setting	Multiplex speed
	Synchronization on/off
	Synchronous/Multiplex mode
	Segment displ. bright/dark/off
	Filter strength (10 levels)
	Response delay 0 to 20 s
	Foreground suppression range
	Multiplex sensor address
	Sensor calibration
	Temperature comp. on/off
	Measured value filter
	Hysteresis
	Detection range (3 levels)
	Teach-in mode display/button
	Factory setting (Reset)
	Key disable on/off
	Operating mode
	Switching distance, 2 values
	Normally open/Normally closed

Electrical data

Current draw max.	80 mA
Hysteresis H max.	100 mm
Input function	Synchronization signal
Operating voltage U_b	9...30 VDC
Output current max.	200 mA
Rated operating voltage U_e DC	24 V
Switching frequency	3 Hz
Synchronization	internal, max. 10 sensors
Ultrasonic Frequency	80 kHz

Environmental conditions

Ambient temperature	-25...70 °C
IP rating	IP67
Storage temperature	-40...85 °C

Functional safety

MTTF (40 °C)	178 a
---------------------	-------

Electrical connection

Connection	M12x1-Male, 5-pin
Polarity reversal protected	yes
Short-circuit protection	yes

General data

Application	Object detection
Approval/Conformity	cULus LISTED CE EAC WEEE
Operating mode	Retro-reflector Reflectionlight scanner (switching point) Refl.light scanner (window)
Series	M30M1

Material

Housing material	Brass PBT, TPU
Material sensing surface	PU foam/Epoxy resin/Glass
Surface protection	nickel plated

Mechanical data

Dimension	Ø 65 x 116.2 mm
Mounting	Nut M30x1.5

Output/Interface

Switching output	PNP normally open/normally closed (NO/NC)
-------------------------	---

Range/Distance

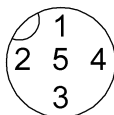
Range	600...8000 mm
Rated operating distance Sn	6000 mm
Repeat accuracy	± 0.15 %FS
Resolution	≤ 0.180 mm

Remarks

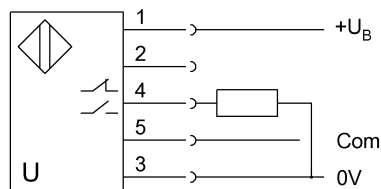
The sensor is functional again after the overload has been eliminated.
 Reference object for Sn: tube Ø27mm. Max. range refers to the aligned plate.
 Do not press key using a pointed tool.
 Order accessories separately.
 For additional information, refer to user's guide.
 For further information about the MTTF and B10d see MTTF / B10d certificate

Indication of the MTTF- / B10d value does not represent a binding composition and/or life expectancy assurance; these are simply experiential values with no warranty implications. These declared values also do not extend the expiration period for defect claims or affect it in any way.

Connector Drawings



Wiring Diagrams



Help Views

